



NATEBY PRIMARY SCHOOL

HOLIDAY LIST 2024/2025 edited penalty info

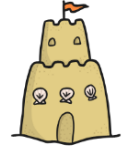


AUTUMN TERM 2024



Teacher Day
 School re-opens
 School closes for **HALF TERM**
 School re-opens
 School closes for Christmas
 Teacher Day
 Teacher Day

Monday 2nd September 2024
 Tuesday 3rd September 2024
 Friday 18th October 2024
 Monday 28th October 2024
 Wednesday 18th December 2024
 Thursday 19th December 2024
 Friday 20th December 2024



SPRING TERM 2025

School re-opens
 School closes for **HALF TERM**
 School re-opens
 School closes for Easter

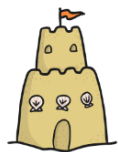
Monday 6th January 2025
 Friday 14th February 2025
 Monday 24th February 2025
 Friday 4th April 2025



SUMMER TERM 2025

School re-opens
 School closed for May Day
 School closes for **HALF TERM**
 School re-opens
 School closes for Summer
 Teacher Day
 Teacher Day

Tuesday 22nd April 2025
 Monday 5th May 2025
 Friday 23rd May 2025
 Monday 2nd June 2025
 Friday 18th July 2025
 Monday 21st July 2025
 Tuesday 22nd July 2025

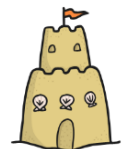


Please Note:

It is a legal requirement for parents/carers to obtain the permission of the Headteacher before removing their child from school in order to take **any** leave in term time. Parents **do not** have an automatic right to take their children out of school for leave during term time and may be issued with a Penalty Notice (£160 per parent per child. This can be paid at £80 if paid within 21 days) if they do so without prior arrangement with the Headteacher. **The legislation only allows the Headteacher to authorise such leave in exceptional circumstances.**



To apply for a child to be granted leave from school parents should **complete an application for leave form and return it to school for consideration well in advance of the proposed leave and before committing to any expense.** Upon receipt of a request the Headteacher will decide as to whether to authorise the absence, being mindful of government regulations and LA guidance. By definition, exceptional trips should not occur regularly.



For more information please see our School Attendance Policy on the school website

